



MONTHLY MEMBERSHIP PROGRESS REPORT

District 318 A

Results as of: 06/30/2019

GMT: N S SANKAR

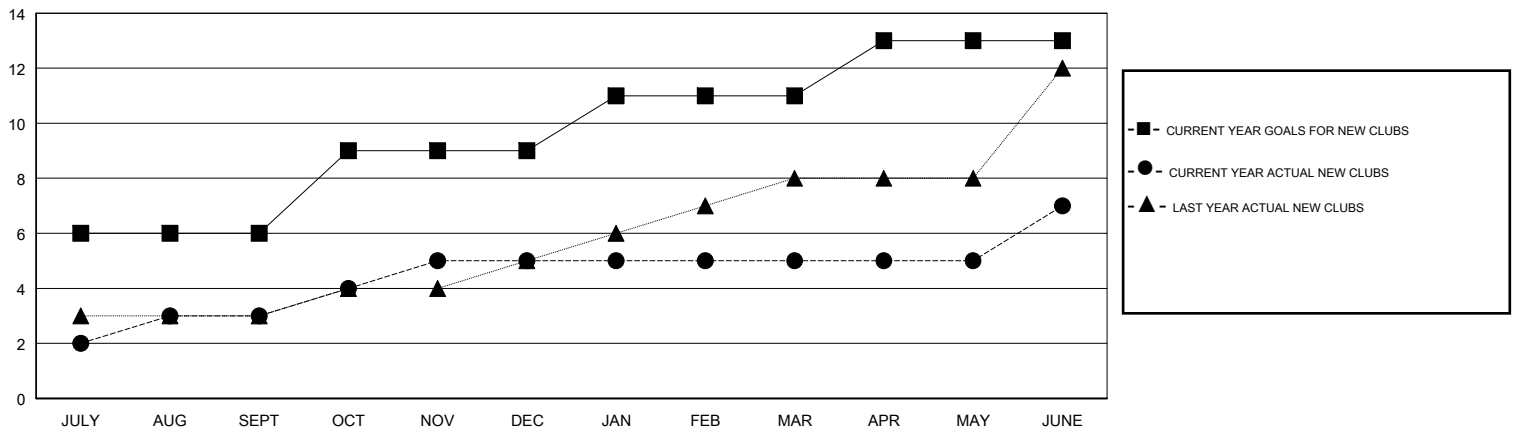
LOCATION INDIA

GMT CA

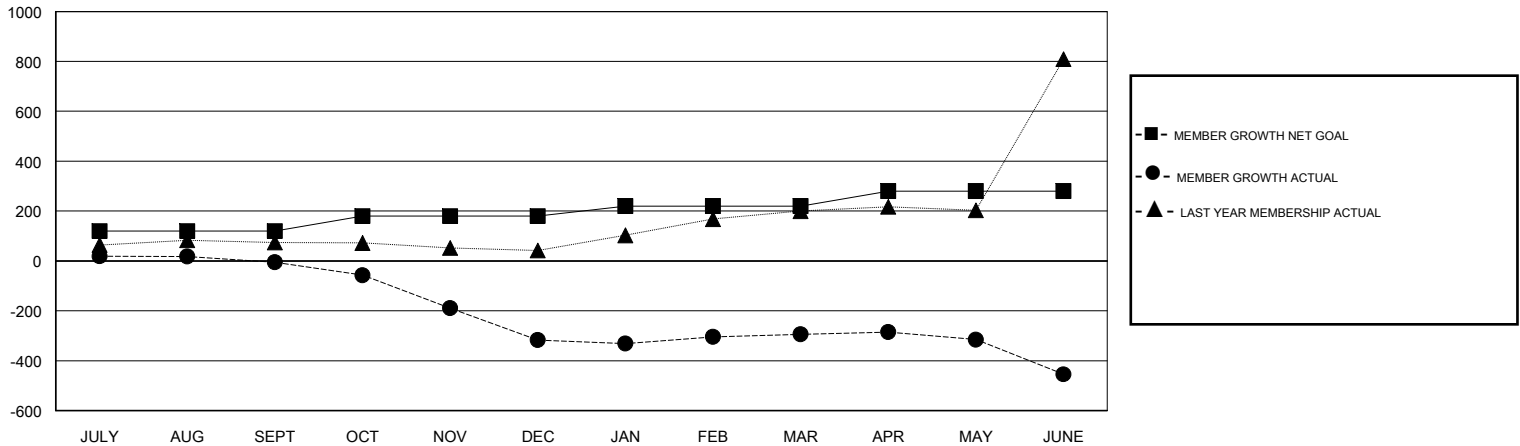
Clubs			
RESULTS FOR 2018-2019			
QUARTER	NEW CLUB GOAL	NEW CLUBS	DROPPED CLUBS
JULY/AUG/SEPT	6	3	0
OCT/NOV/DEC	3	2	1
JAN/FEB/MAR	2	0	0
APR/MAY/JUNE	2	2	4

Members			
RESULTS FOR 2018-2019			
QUARTER	MEMBER GROWTH NET GOAL	MEMBER GROWTH ACTUAL	DROPPED MEMBERS ACTUAL (including transfers)
JULY/AUG/SEPT	120	143	137
OCT/NOV/DEC	60	82	386
JAN/FEB/MAR	40	107	64
APR/MAY/JUNE	60	239	394

GOALS AND ACTUAL NEW CLUBS CUMULATIVE



GOALS AND ACTUAL MEMBERS CUMULATIVE



DROPPED CLUBS: 5

83 CLUBS OF 129 ADDED 1 OR MORE NEW MEMBERS

GENDER DISTRIBUTION

MALE 3,072 (77.97%)
 FEMALE 868 (22.03%)
 Women Percentage Fiscal Year Goal: 25%

DROPPED MEMBERS

[CLICK HERE FOR CUMULATIVE MEMBERSHIP DATA](#)

DECEASED	24
CLUB CANCELLED	80
OTHER	877
TOTAL	981

TOTAL FAMILY UNIT MEMBERS	1,551
FAMILY MEMBERS PAYING HALF DUES	807